



£1,995

Marine Parade, Worthing

- Top-floor luxury apartment with unique coastal location
- Spacious open-plan kitchen/living area with stylish furnishings and entertainment amenities
- High-end kitchen appliances, including Bosch Induction Hob and Wine Fridge
- Well-appointed bedrooms with King Size Beds, storage, and TVs
- Luxurious bathroom with built-in TV and separate shower room
- Modern design with wooden floorboards and bright interiors
- EPC Energy Rating C (69)

ROBERT LUFF & CO AND DELIGHTED TO OFFER FOR RENT A FULLY FURNISHED LUXURY THREE BEDROOM MAISONETTE LOCATED ON WORTHING SEAFRONT.

This top-floor apartment offers a unique living experience. As you enter, you'll encounter a journey of 35 flights of communal stairs. Upon reaching the top floor, you step into the apartment's hallway, and straight ahead, you'll find yourself in a spacious open-plan kitchen/living space. This area is beautifully furnished and adorned with atmospheric lighting and quirky design elements. It includes a flat-screen TV, a Bluetooth speaker, a comfortable sofa bed, a dining table for 4-6 guests, and a breakfast bar with seating for an additional 3.

The kitchen is equipped with top-of-the-line appliances, featuring a Fridge/Freezer, Bosch Induction Hob, Extractor Fan, Bosch Double Oven/Microwave, Wine Fridge, Boiling Water Tap, and Built-in Sterilised Water Filter Tap. You'll also find a Knife Block Set, Pots, Pans, Cutlery, Glasses, Cups, Plates, and Bowls for all your culinary needs.

On the same floor, there's a well-presented shower room, a spacious cupboard perfect for storing coats, bags, and shoes, and a double bedroom with a King Size Bed, Chest of Drawers, Dressing Table, Wardrobe, Flat Screen TV, and Bedside Tables.

T: 01903 331247 E: info@robertluff.co.uk
www.robertluff.co.uk

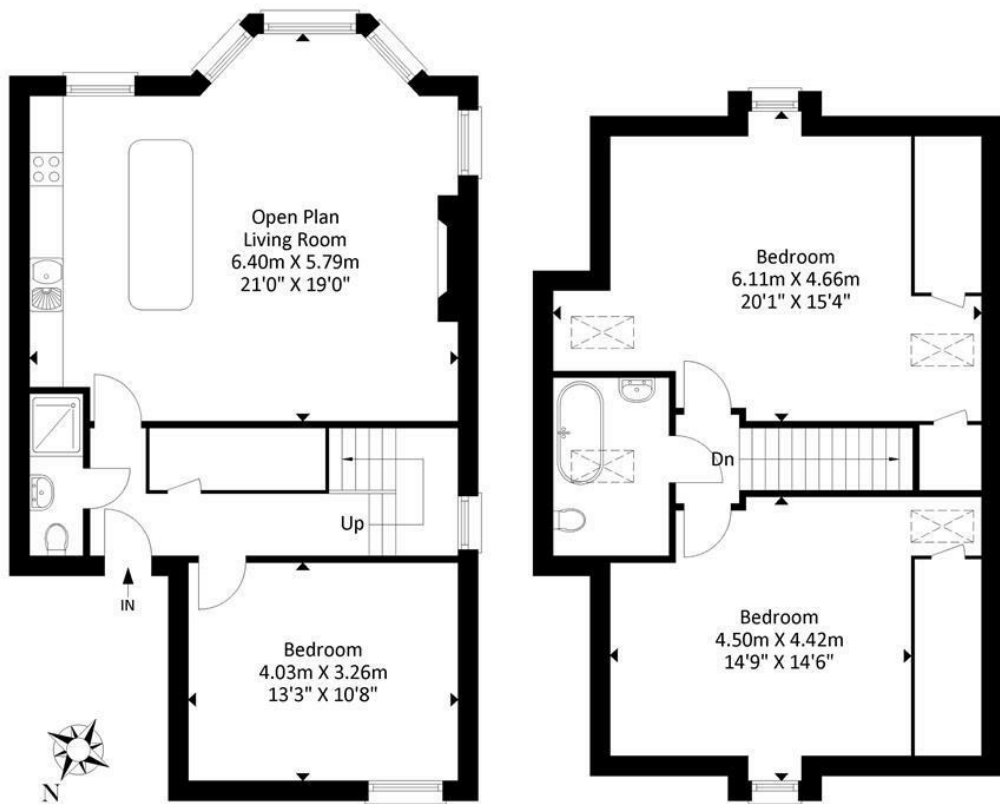
**Robert
Luff & Co**
 Sales | Lettings | Commercial



Accommodation




Flat 4, Marine Parade, Worthing




Second Floor
Approximate Floor Area
643.68 sq ft
(59.80 sq m)

Third Floor
Approximate Floor Area
596.32 sq ft
(55.40 sq m)

Approximate Gross Internal Area = 115.20 sq m / 1240.0 sq ft
Illustration for identification purposes only, measurements are approximate, not to scale.
Copyright GDImpact 2018

Energy Efficiency Rating		Current	Potential
Very energy efficient - lower running costs			
<div><div></div><div>(92 plus) A</div></div>			
<div><div></div><div>(81-91) B</div></div>			
<div><div></div><div>(69-80) C</div></div>			
<div><div></div><div>(55-68) D</div></div>			
<div><div></div><div>(39-54) E</div></div>			
<div><div></div><div>(21-38) F</div></div>			
<div><div></div><div>(1-20) G</div></div>			
Not energy efficient - higher running costs			
		69	81
England & Wales		EU Directive 2002/91/EC	
			

Environmental Impact (CO ₂) Rating		Current	Potential
Very environmentally friendly - lower CO ₂ emissions			
(92 plus) A			
(81-91) B			
(69-80) C			
(55-68) D			
(39-54) E			
(21-38) F			
(1-20) G			
Not environmentally friendly - higher CO ₂ emissions			
England & Wales		EU Directive 2002/91/EC	

The information provided about this property does not constitute or form any part of an offer or contract, nor may it be regarded as representations. All interested parties must verify accuracy and your solicitor must verify tenure/lease information, fixtures and fittings and, where the property has been extended/converted, planning/building regulation consents. All dimensions are approximate and quoted for guidance only as are floor plans which are not to scale and their accuracy cannot be confirmed. References to appliances and/or services does not imply that they are necessarily in working order or fit for the purpose.